



Assembly Guide Professional Lap Pool Series

Please Read:

Assembling an EZ Lap Pool is designed to be easy. But it does take time and patience, especially our larger professional series. Following the steps of this guide will help to make the assembly process easier and faster, but keep in mind as the assembly process wears on, your body may become tired. Take your time and do not fight with it.

Although your pool can be assembled with small number of people, we highly recommend having more people who are able to lift some weight as this will make assembling that much easier. Consult your EZ Pool rep for guidance based on your size.

WARNING: Take care when opening the crate to **NEVER EVER MOVE THE POOL MATERIAL USING THE BOTTOM FLAPS.** These are NOT designed to bear any kind of pulling weight. If you try and move the pool material using these flaps, they will come right off - and this is not covered under warranty.

GROUND PREPARATION: There are several details about ground prep that can dramatically impact your pool's function and lasting durability. Be sure to familiarize yourself with the ground pre guidelines found on our website. Go to <https://www.4ezpool.com/preparing-the-ground.html>. Seek guidance from your rep if you have any questions.

Please Note: Damage to your pool caused by ground issues are not covered under warranty.

POSITIONING TO UNROLL - PAGE 1

When placing the pool material in the site area, have it face long ways from A to C. There should be a label indicating in which direct to unroll. So position the folded pool material on the opposite side of the direction you will unroll. In other words, if you are unrolling towards D, then position near B.



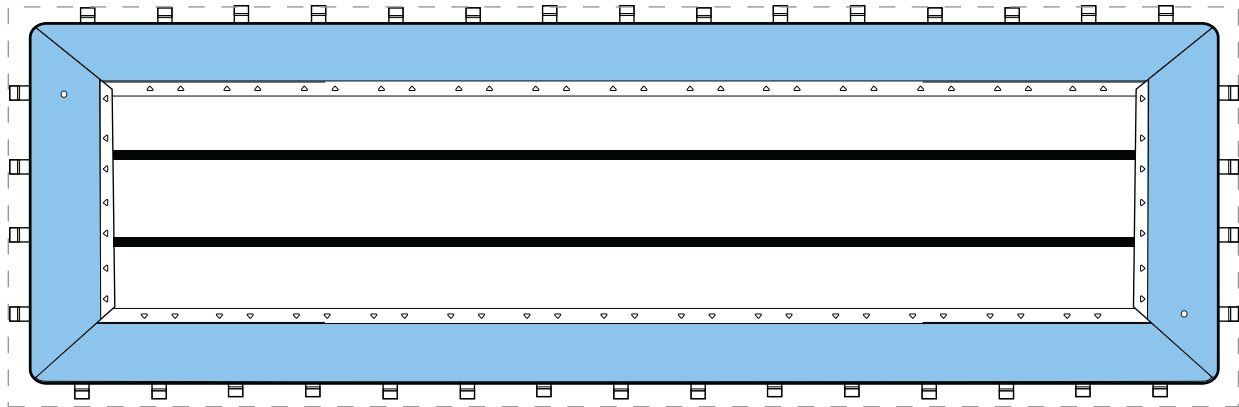
UNFOLDING THE POOL MATERIAL - PAGE 2

After unrolling, do not try to position the pool yet. The material is too heavy to shift. The pool material is folded according-style, so grab the top fold and start pulling to the opposite end. As you pull, create a slight wave action with the pool material to trap air underneath the pool material to make it easier to glide across. If you have seen a football game where they unfold a giant flag, you will see them doing this as well. **NEVER EVER POOL THE POOL MATERIAL FROM THE FLAPS. THEY WILL COME RIGHT OFF.**



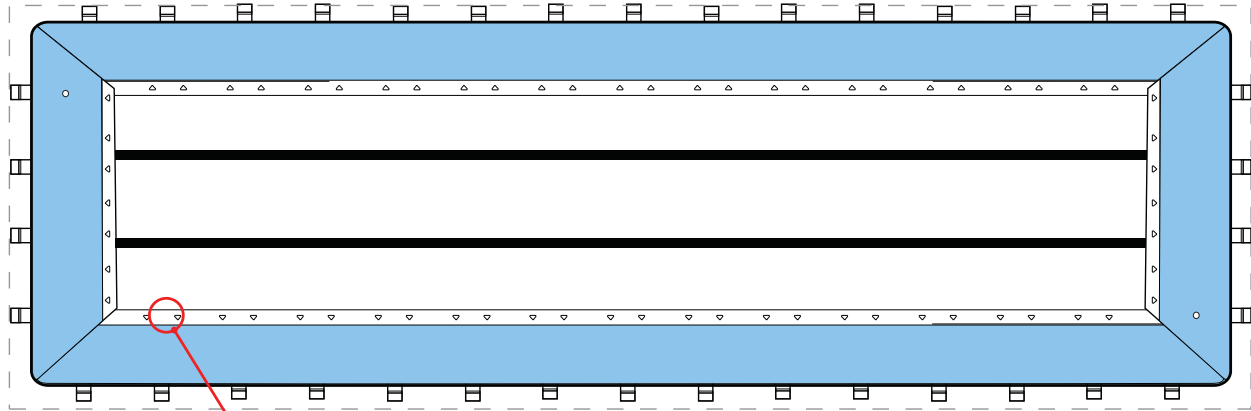
NEVER EVER POOL THE POOL MATERIAL FROM THE FLAPS. THEY WILL COME RIGHT OFF.

After unfolding, you can now start to position the pool material in the proposed pool site. Again, creating gentle waves to trap air to move the material. Again, NOT BY USING THE FLAPS.

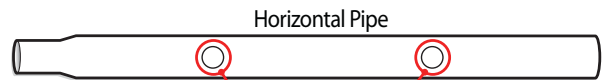


ASSEMBLING THE POOL - Page 3

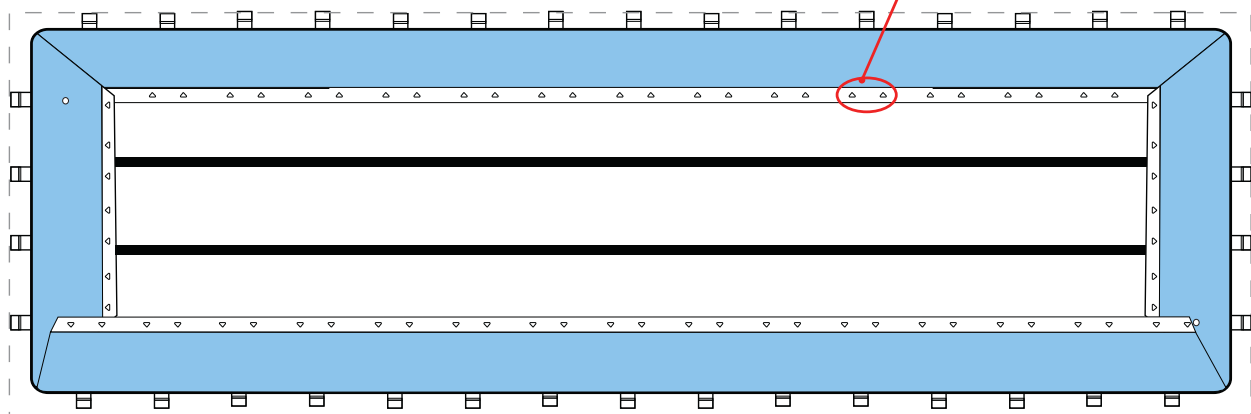
With the pool positioned in the pool site area, we will be assembling one long wall first. Start inserting the longer horizontal pipes through the top pool wall sleeve. You can start from either end, but it is best to work always from one end and always in the same direction as the horizontal pipes have a male end and a female end.



This is a Pool Wall Sleeve.
It is along this sleeve that you will
insert the HORIZONTAL PIPE.

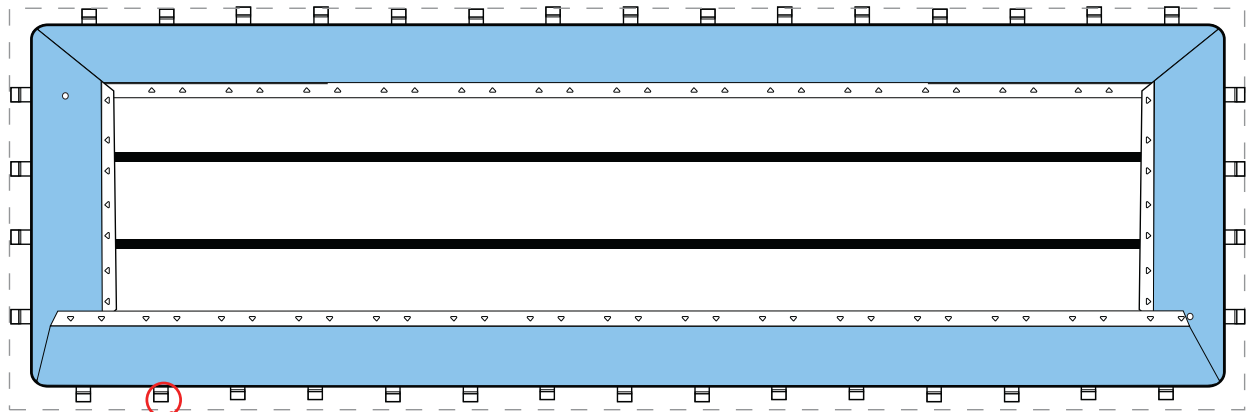


IMPORTANT NOTE: The horizontal pipe has two
holes. These holes should correspond with the
two openings on the Pool Wall sleeve.

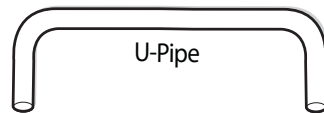


ASSEMBLING THE POOL - Page 4

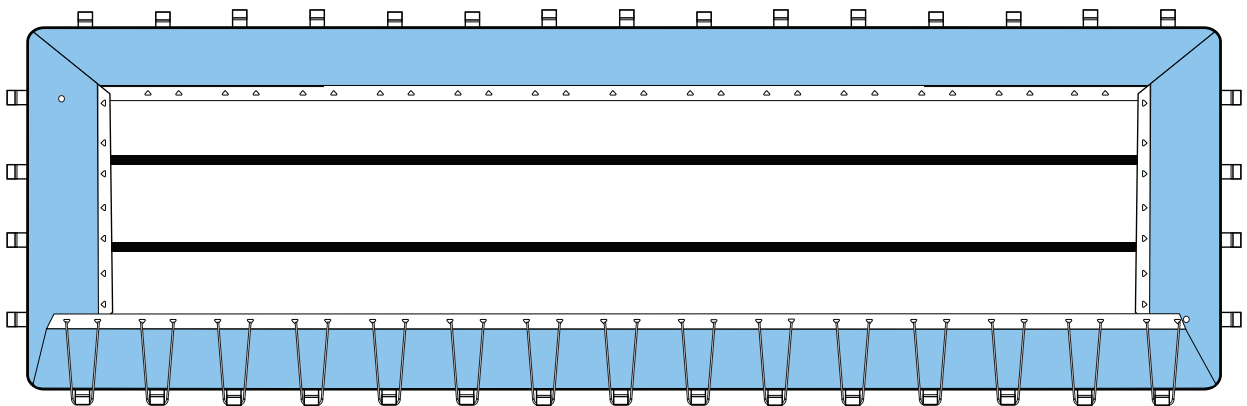
After the horizontal pipes are all in place, then insert u-pipes through each of the flaps. This can be done in unison with the horizontal pipes are being inserted. **IMPORTANT NOTE:** The horizontal pipes are male / female end. If you do the opposite long wall at the same time, be sure the pipes are going in the opposite direction



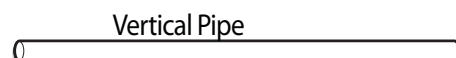
This is a Pool Liner Flap.
It is in this flap that you will
insert the U-PIPE.



Once the horizontal pipes and u-pipes are in place, you can start attaching the vertical pipes. There is two per u-pipe. They fit over the u-pipe and through the top liner sleeve openings into holes on the horizontal pipes.

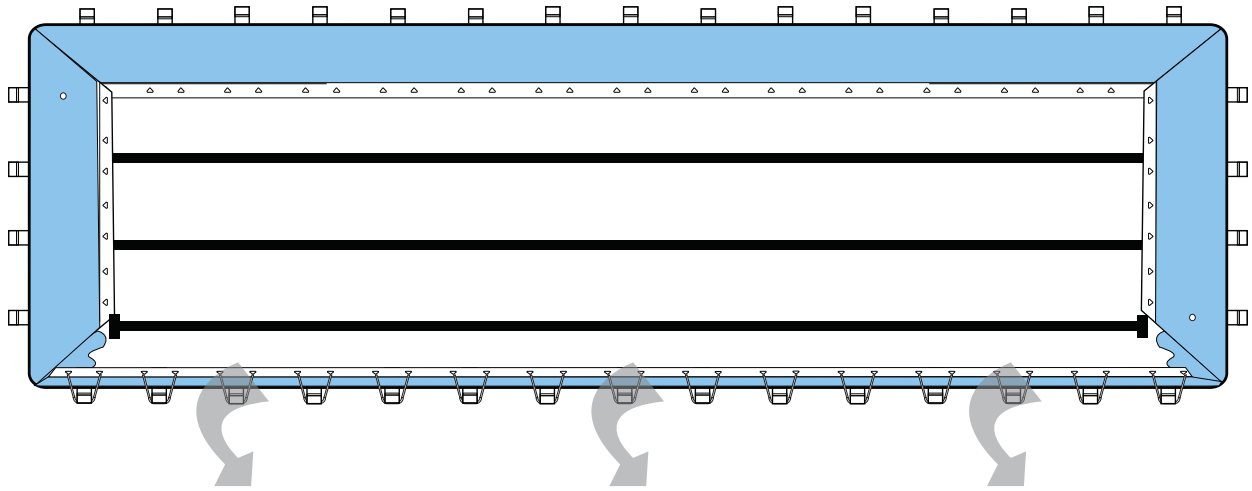


This is the VERTICAL PIPE.
It attaches to the U-PIPE and
fits into holes on the HORIZONTAL PIPE.

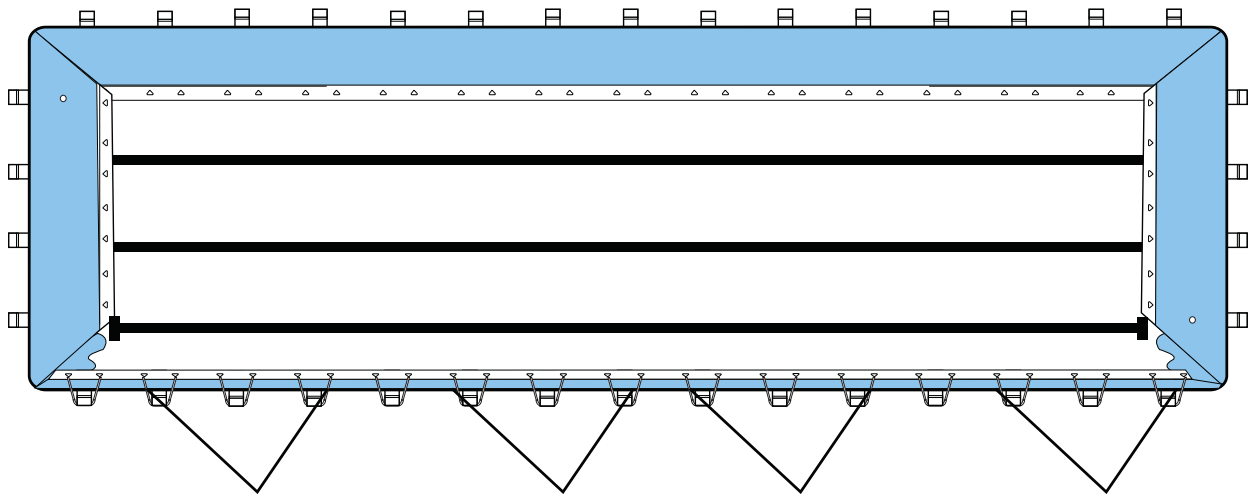


ASSEMBLING THE POOL - Page 5

With all the parts for one long wall finished and in place, lift up and out the wall so that it is upright. You will need to guess the number of people needed for this, but a general rule is about 1 person per 10 feet.



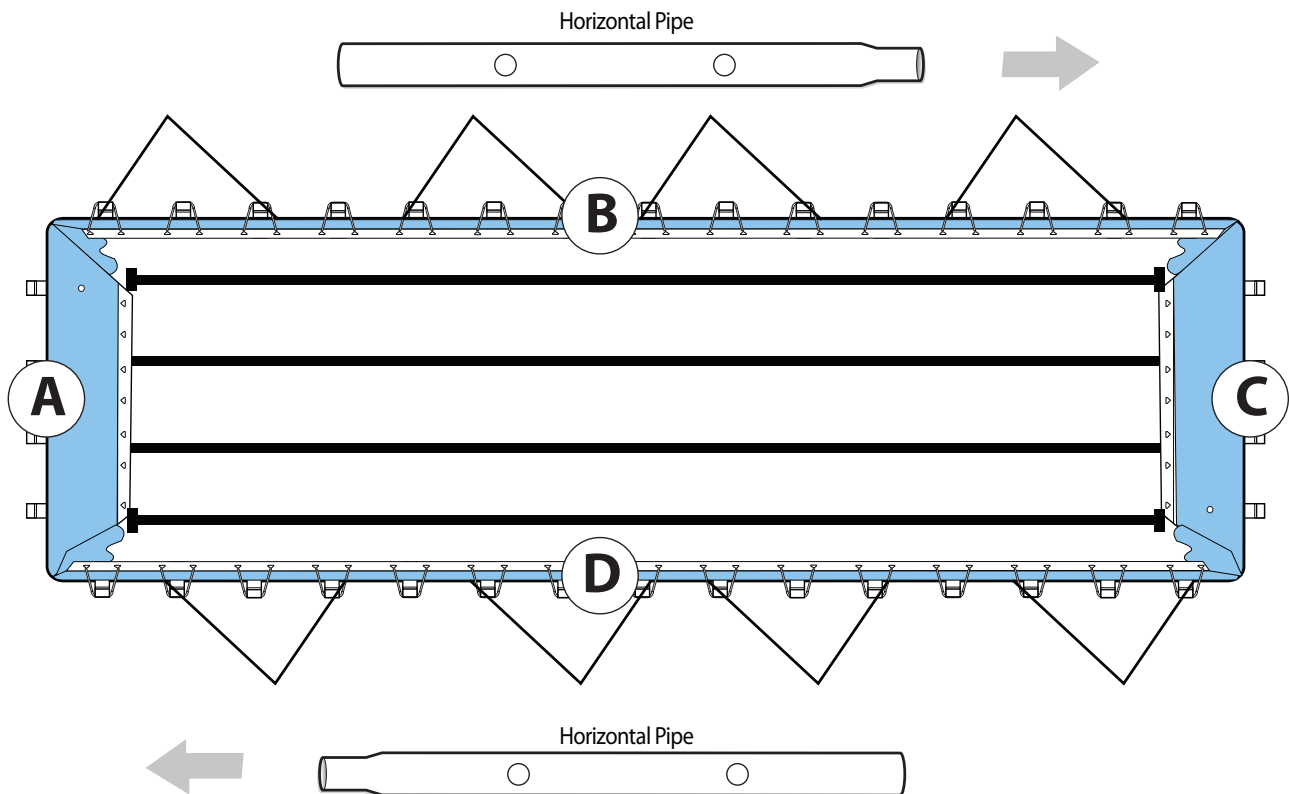
Once the pool wall is upright (90° from the ground), you will need to anchor the pool wall temporarily to hold it in place. This anchoring will remain in place until the pool is filled. We will explain why later. The rule is to have a secure anchor, able to hold at least 50 pounds, every 10 feet. The rope/strap can slip around the exposed horizontal pipe found at the sleeve openings every five feet.



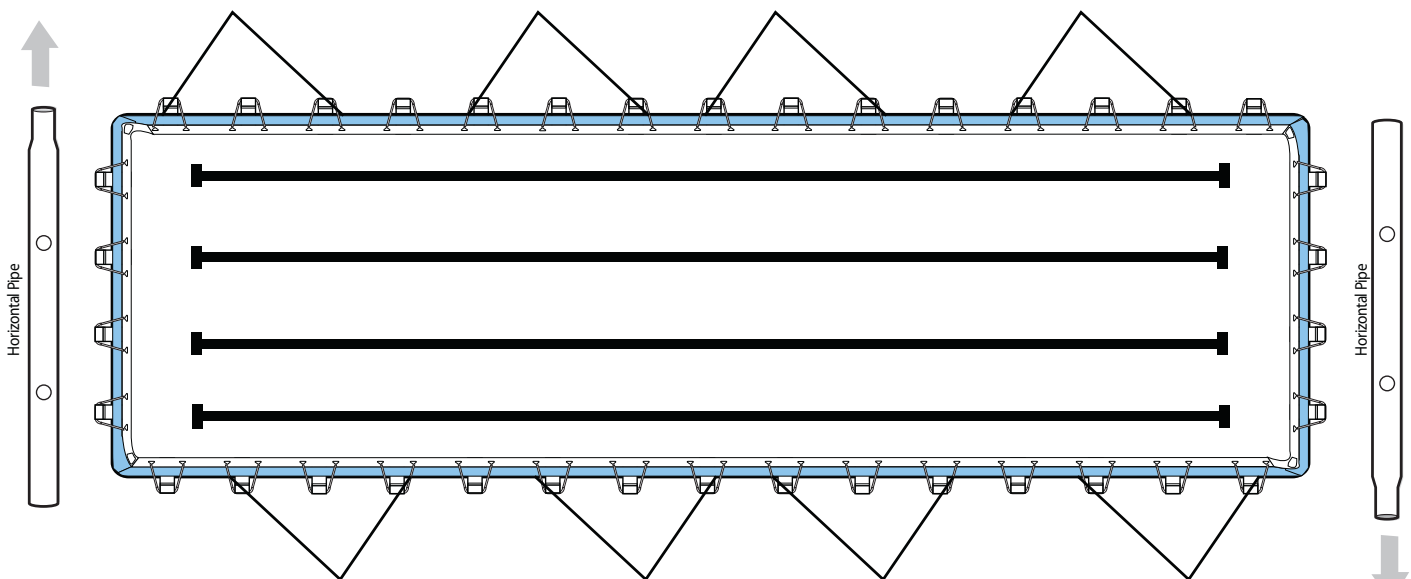
Repeat this process on the other side of the pool until both long sides are up and anchored.

ASSEMBLING THE POOL - Page 6

VERY IMPORTANT TIP: When assembling the other longer pool wall, be sure that the horizontal pipes are pointing in the opposite direction. In other words, the female end of the horizontal pipe on the B wall is pointing to C, and the female end of the horizontal pipe on the D wall is pointing to A - so that they will hook up properly in the end.

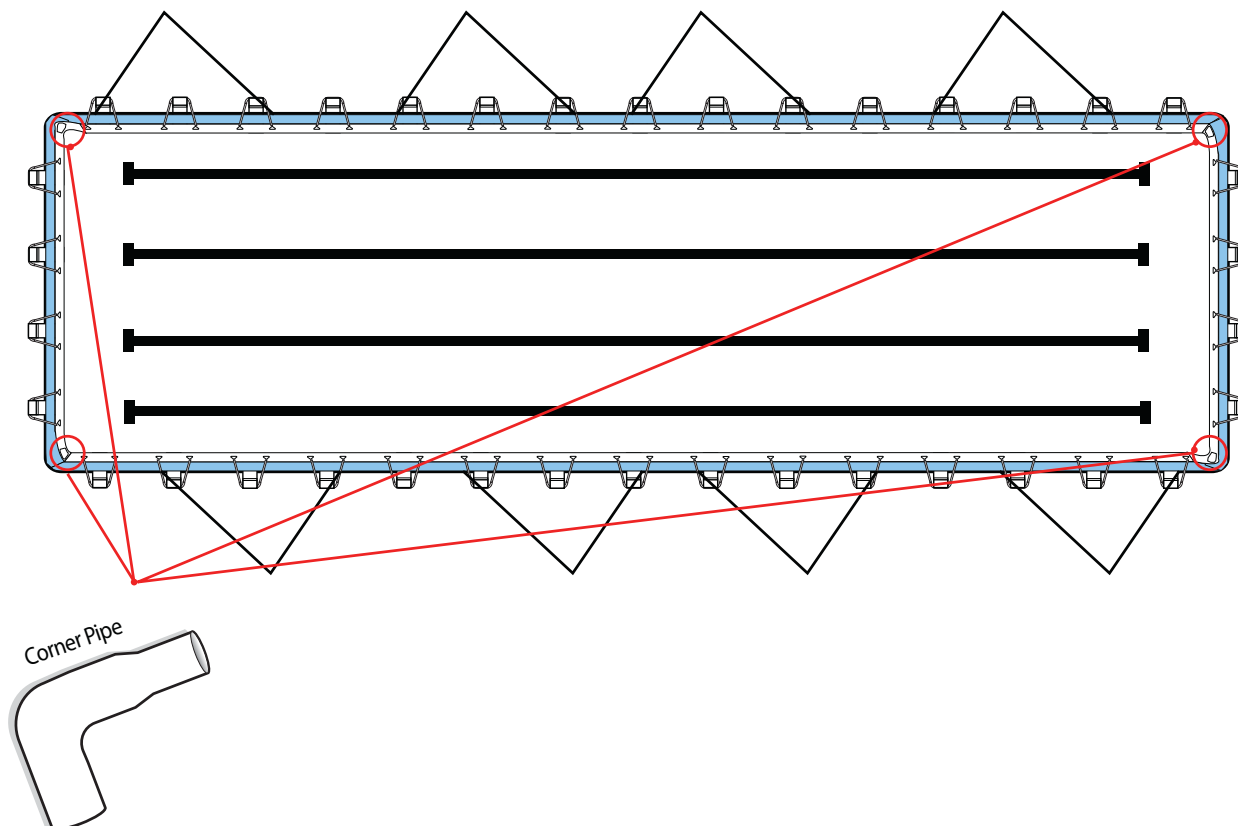


Continue inserting them through the shorter pool wall sleeve. Also attach the u-pipes and verticals. These walls will not need to be anchored up, as the anchored longer walls will hold them up.



ASSEMBLING THE POOL - Page 7

The corners are similar to the horizontal pipes in that they have a female and male side. They can be a bit stubborn to get into place, as they help to keep the pool frame taught. By maneuvering the liner material around and the frame you can get the corners in place. Once all four are in place, you can start filling the pool.



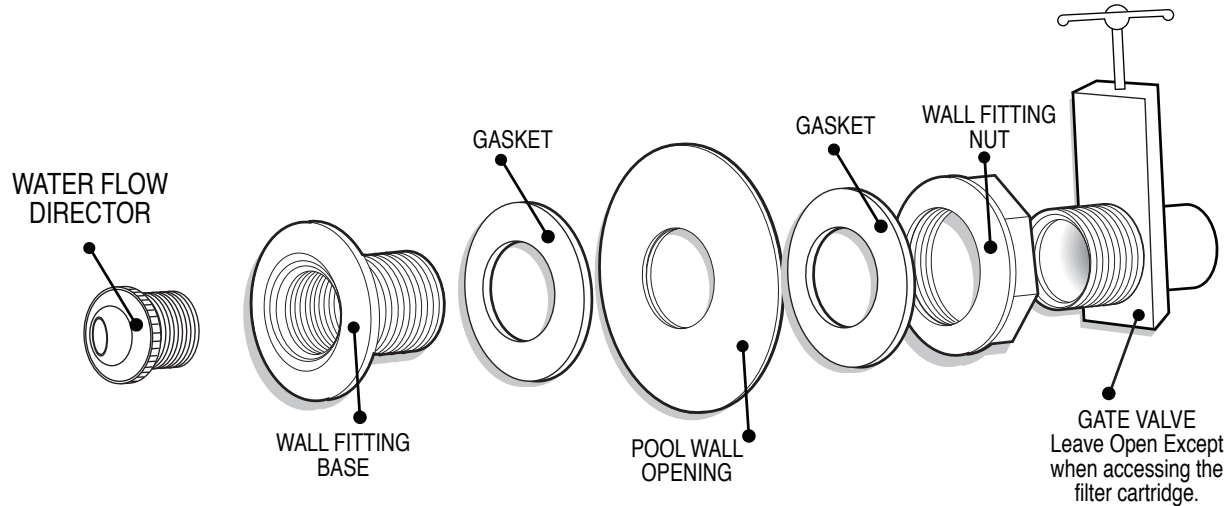
WARNING: All the frame components are designed to slip into place. If they are not going in, it is because the connections are not straight or the liner is bunched up.

The HORIZONTAL PIPES are heavy, do not let your weariness of the assembly cause you to fight with the frame. Be patient and it will attach.

IMPORTANT NOTE: The Pool Walls will bow in due to the weight of the poles and the angle of the supports. As the water fills, the bowing will subside, and (depending on how high you fill) may bow out a bit.

ATTACHING THE RETURN LINE - Page 8

Follow the below instructions for installing the return line fittings. Your plumber may elect not to use the gate valve, which is fine, but we highly recommend that both the return line and the skimmer have shut off valves attached near the pool, in the event something happens with the plumbing line. This will allow you to shut off the water flow at the pool source.



IMPORTANT FLOW TIP: The gate valves can be partially shut to control water flow. The further openings for the water return and sometimes receive less pressure. Slightly reducing the gate valve openings nearest to the pump maintains even pressure.

HOW CAN YOU KNOW YOU HAVE GOOD EVEN FLOW? The water will tell you. If you are heating and are finding areas colder than the rest, adjust the flow. If the water on one end is cloudy than the other, check the flow.

Be sure to read your filter's guidelines for when to clean to also maintain good even water flow rate.



5 YEAR LIMITED WARRANTY

We understand that most of our buyers are non-swimming pool professionals, so we have made owning and maintaining a portable swimming pool easy and affordable. But if anything goes wrong within the first five years, we will repair at no charge to you. The first 90 days, we cover shipping both ways. After that, your only obligation is to pay for the shipping to return the item back to us for repair. If, upon inspection, the repair was the result of a manufacturer's defect or error, the shipping costs will be refunded back to you (up to \$50 USD total per warranty shipment).

Special Note: As a courtesy to our customers, we offer post-dating on our warranty. If you are buying a portable pool package to take advantage of a special offer or sale price but are not planning to set it up for a month or two or longer, just let us know in advance and we will note your account to post-date your warranty.

Warranty Procedure: A warranty procedure is designed to help document and make a warranty process easier. If you feel you have a valid warranty claim, please email pictures of you your warranty concern to customer.care@reallyezpools.com. Be sure to include the full name the pool was purchased for so we can match our records.

Things you should know: 1.) An item is received and shows signs of abuse or abnormal use, there will be a charge to repair the item. This charge depends on the item being returned, but will not exceed \$100USD. 2.) if an item is inspected and the damage is a result of faulty install at the buyer's location, no further warranty repair will follow until proof the cause is fixed. 3.) If an item is received and has water, dirt or anything else that will impair our ability to repair, there will be a flat \$75 fee to clean the item first. Please make ever effort to clean and dry the item prior to shipping back.

Please Note: Warranty repairs tend to take up to 20 days depending on the condition of the returned item and the time of year. During September 15 through May 1, warranty time is about 5-10 days. from may 1 to September 15, warranty time is about 15-25 days.

Disclaimer: This warranty is applicable to only portable pool packages and accessories bought from EZ Pool Products, Inc or online through www.reallyezpools.com. We are not responsible for any other product or accessory purchased from any other source.

Disclaimer: At no time will the maker and/or the maker's suppliers be responsible for any damage to the liner caused by your acts, the acts of others and shall have no liability to repair liner, or part(s) so damaged. The maker is not responsible for any damage to a part(s) or liner as a result of acts of God, nature, ground movement or some other unforeseen occurrence. We reserve the right to modify/discontinue without notice any model, style, color or design. - We reserve the right to void your warranty if your pool is out of level or uneven. Absolutely no other warranty will be honored, expressed, implied or noted on the Bill of Sale, other than what is written in this warranty. Customer shall indemnify, defend, and hold harmless the maker of this pool, including its officers, directors, shareholders, agents, employees, and representatives from and against all liability, demands, claims, suits, causes of action, proceedings, costs, losses, damages, recoveries, settlements, assessments, fines, penalties, and expenses (including interest, attorney fees, accounting fees, expert fees) incurred by customer, known or unknown, contingent or otherwise, directly or indirectly, arising from, related to, and/or connected with customer's purchase of the product(s) described on the purchase order, invoice, or other document attached hereto. Customer expressly waives any right of subrogation to any right that the maker now has or may have later in connection with the product(s) described on the purchase order, invoice, or other document attached hereto. If you do not protest the conditions of this warranty in writing and notify EZ Pool Products of your protest within 30 days of your purchase, it will be deemed that you have accepted and agreed to these terms.