



Assembly Guide Professional Lap Pool Series

Please Read:

Assembling an EZ Pool is designed to be Easy. But it does take time and patience, especially our larger professional series. Following the steps of this guide will help to make the assembly process easier and faster, but keep in mind as the assembly process wears on, your body may become tired. Take your time and do not fight with it. Everything about your EZ pool is designed to be EZ.

Although your pool can be assembled with only four people, we highly recommend having more people who are able to lift some weight. This will make assembling your EZ Pool that much easier.

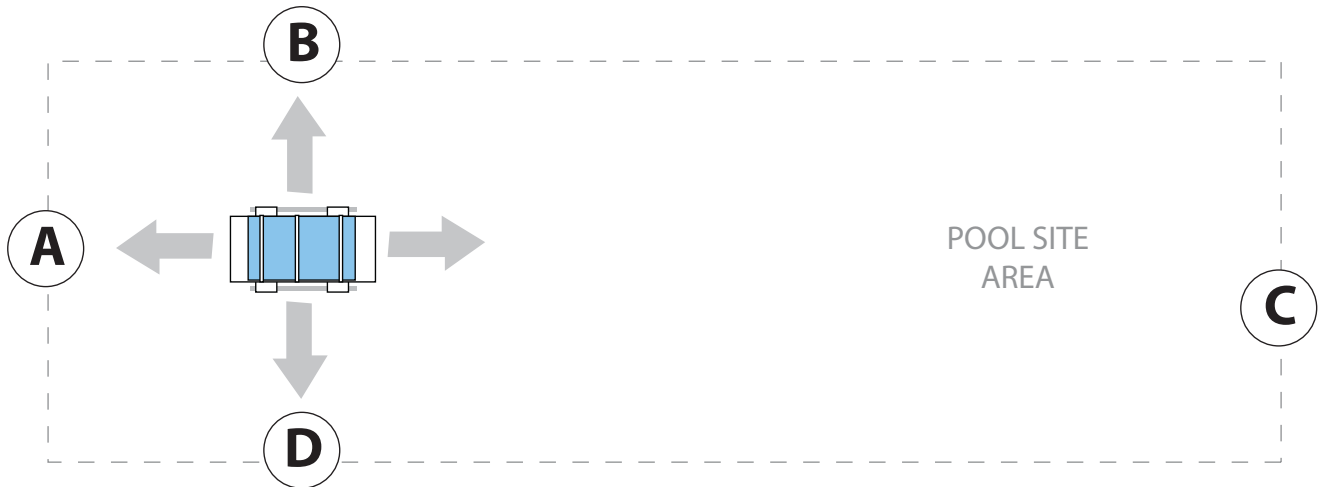
WARNING: Take care when opening the pool crate to **NEVER EVER MOVE THE LINER USING THE BOTTOM FLAPS.** These are NOT designed to bear any kind of pulling weight. If you try and move the liner using these flaps, they will pull right off - and this is not covered under warranty.

GROUND PREPARATION: It is not necessary to kill the grass or lay down a layer of sand for your EZ Pool. Sand is a horrible leveler. Also note that no matter how level the ground is, once you fill the pool it is very possible that verticals may sink down a bit causing the pool walls to bow out. This will not hurt the liner, but may look a little strange. To prevent this from happening, place some type of solid, flat and rigid piece underneath the vertical footing such as: a small piece of 2x4, 1" thick tile, etc...

It is okay if a portion of your pool is on a combination of ground surfaces (i.e.: grass, dirt, concrete). However, if the ground is soft under the pool, a portion of the surface may compact and cause your pool to be out of level. Your pool is designed to tolerate being 3-4 inches out of level.

UNFOLDING THE LINER - Page 1

When placing the pool liner (in it's carrying case), in the pool site area, have it facing long ways from A to C. The steel poles used with the liner carrying case should be pointing A to C. Also, place it in the center of B and D, and approximately 15 feet from A.



Open up the carrying case and inspect the liner. The fold opening in the liner should be facing side B of your pool site area, so that the first roll out of the folded liner would be towards side D. If this is not the case, you will need to rotate the liner.

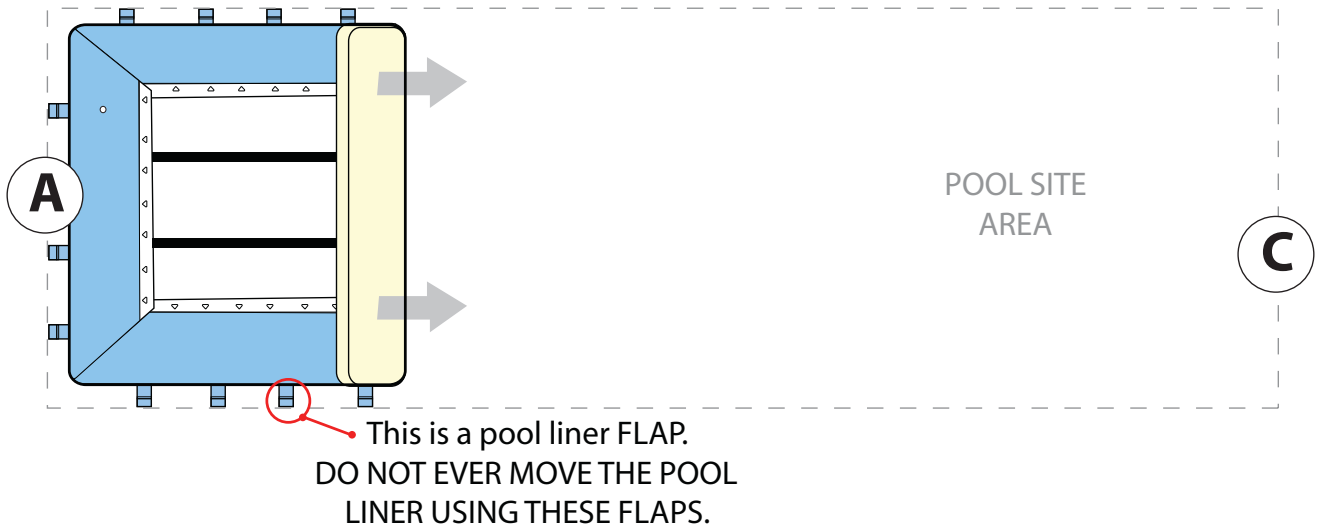


Remove the steel poles used with the carrying case and discard - you will not need them for the pool. Unfold half the liner towards side D, then fold the other half towards side B. You can now remove the carrying case form underneath the liner.

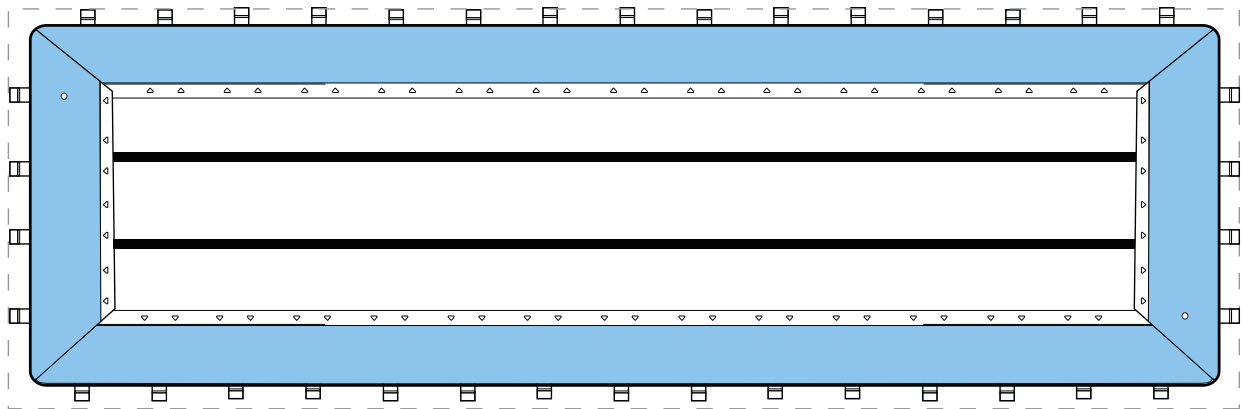


UNFOLDING THE LINER - Page 2

The next portion of the liner, should fold out towards side A, then the remainder will unfold towards side C. As you unfold the liner, you may discover that you are off slightly within the pool site area. Wait until the pool is completely unfolded, to determine how much to move, before repositioning the pool liner. NEVER USE THE FLAPS TO MOVE THE POOL LINER. They are not intended for this purpose and will come off. This is not covered under warranty.

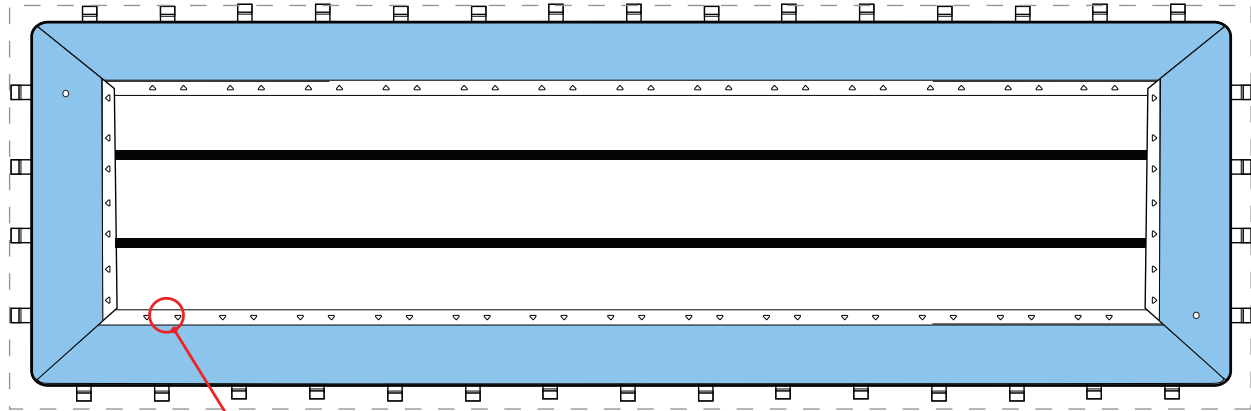


Finish unfolding the liner and position the pool liner accordingly. But remember, NEVER USE THE POOL LINER FLAPS TO MOVE THE LINER!!

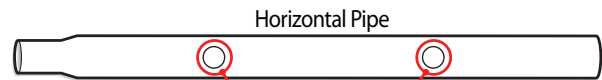


ASSEMBLING THE POOL - Page 3

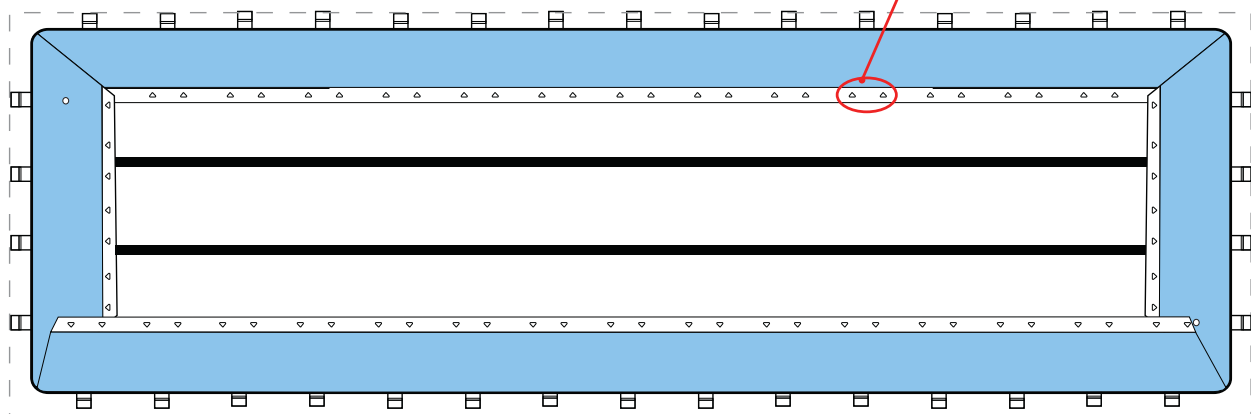
With the pool liner positioned in the pool site area, we will be assembling one long wall first. Start inserting the longer horizontal pipes through the top pool wall sleeve. You can start from either end, but it is best to work always from one end and always in the same direction as the horizontal pipes have a male end and a female end.



This is a Pool Wall Sleeve.
It is along this sleeve that you will
insert the HORIZONTAL PIPE.

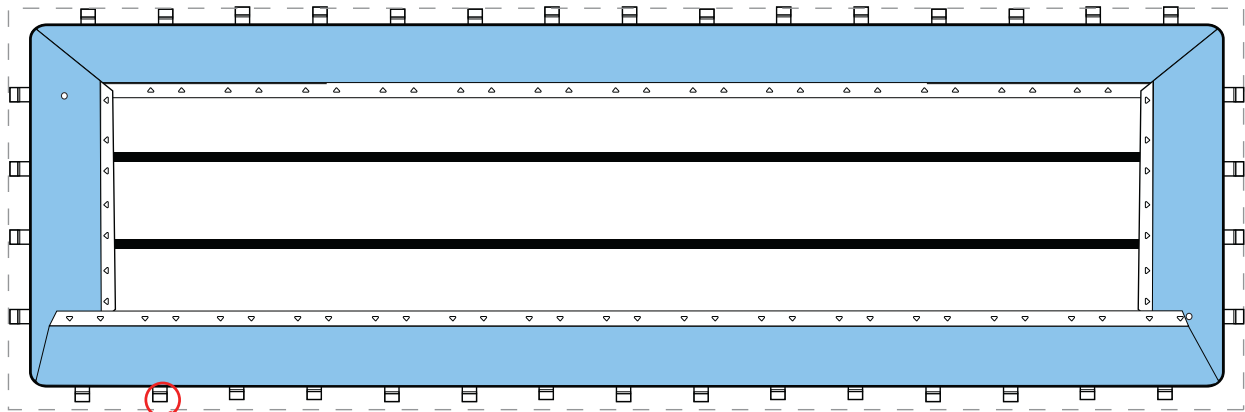


IMPORTANT NOTE: The horizontal pipe has two
holes. These holes should correspond with the
two openings on the Pool Wall sleeve.

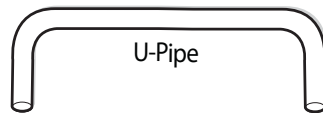


ASSEMBLING THE POOL - Page 4

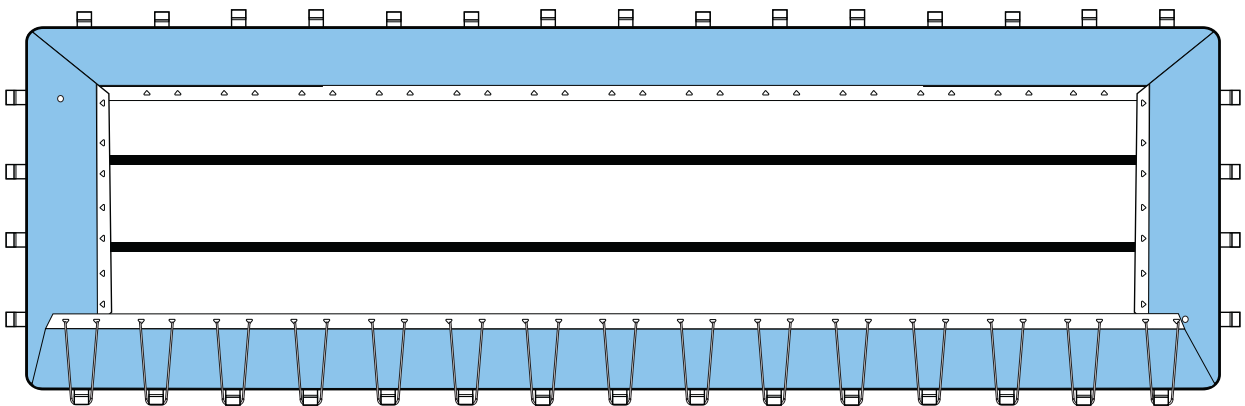
There should be 15 longer horizontal pipes on one long side of the pool. Once these are in place, insert the u-pipes into the flaps at the base of this pool wall.



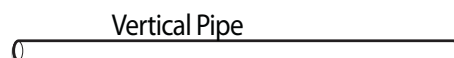
This is a Pool Liner Flap.
It is in this flap that you will
insert the U-PIPE.



Once the horizontal pipes and u-pipes are in place, you can start attaching the vertical pipes. There is two per u-pipe. They fit over the u-pipe and through the top liner sleeve openings into holes on the horizontal pipes.

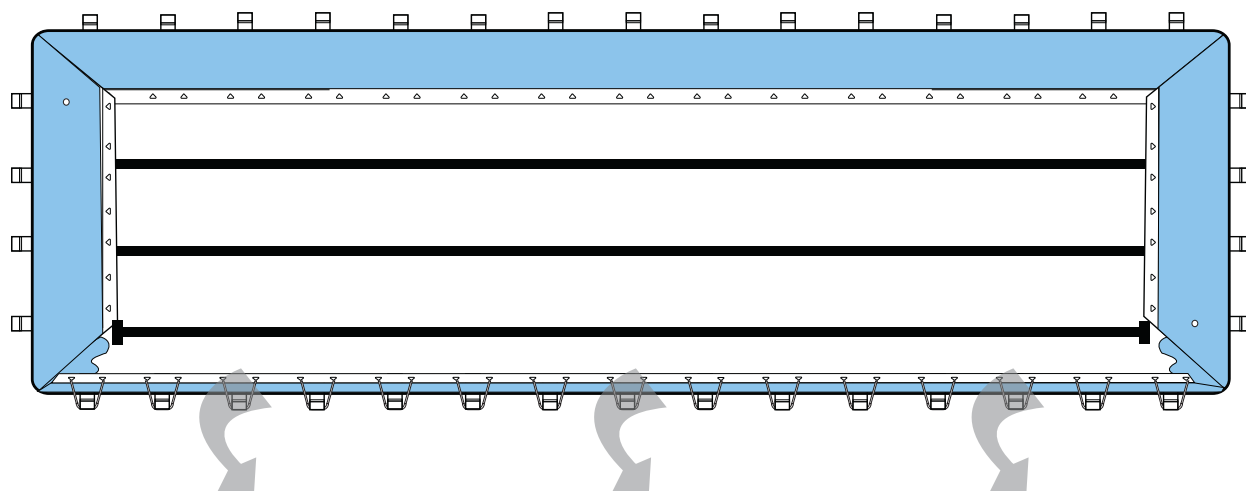


This is the VERTICAL PIPE.
It attaches to the U-PIPE and
fits into holes on the HORIZONTAL PIPE.

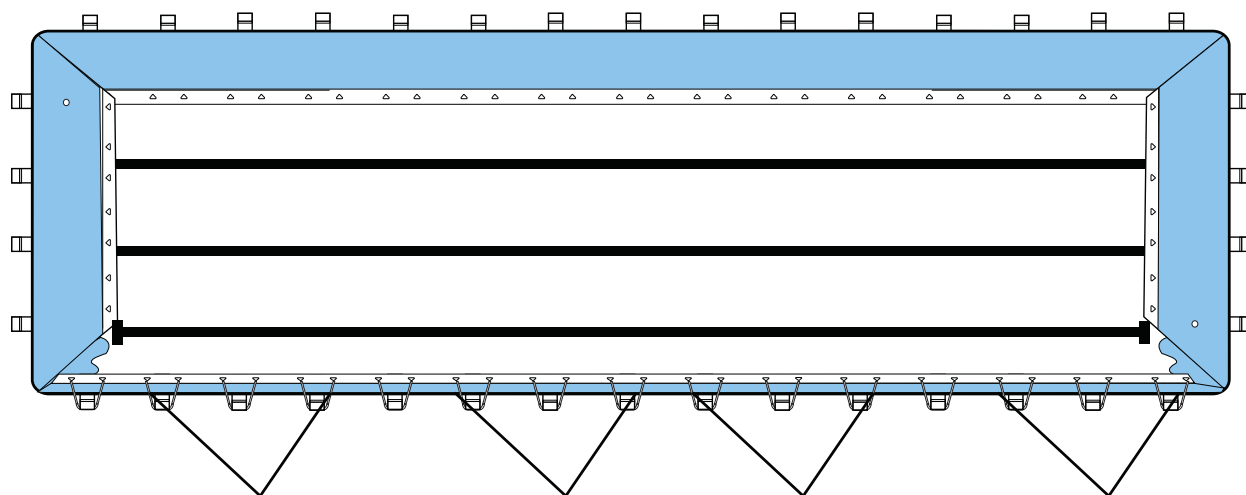


ASSEMBLING THE POOL - Page 5

With all the parts for one long wall finished and in place, lift up and out the wall so that it is upright. You will need to guess the number of people needed for this, but a general rule is about 1 person per 10 feet. So one wall should have at least 7 to 8 people to lift it up and out.



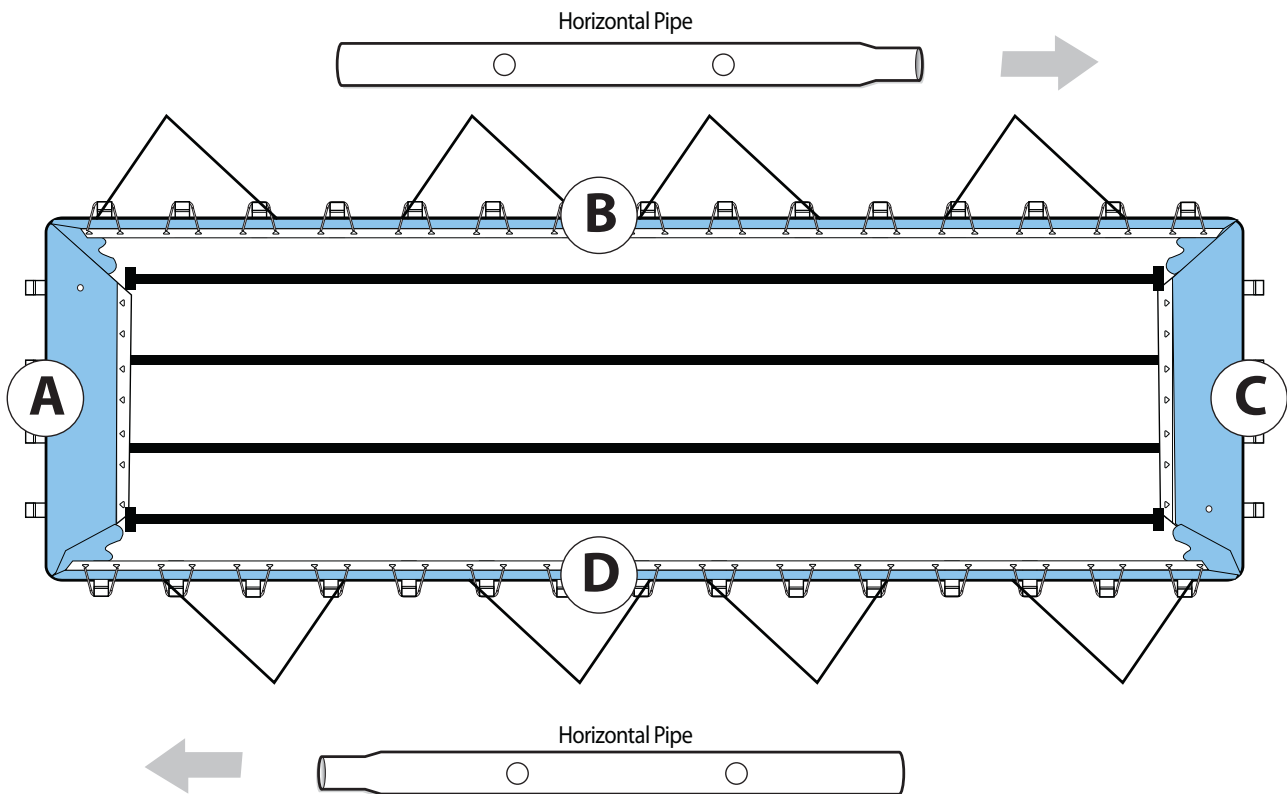
Once erected, use rope to anchor the pool wall up temporarily. For a pool wall this long, you should have at least 4 anchor points. Their purpose is merely to hold the pool wall while we finish assembling the pool and filling it with water. Once filled, the anchor lines will go loose and can easily be removed.



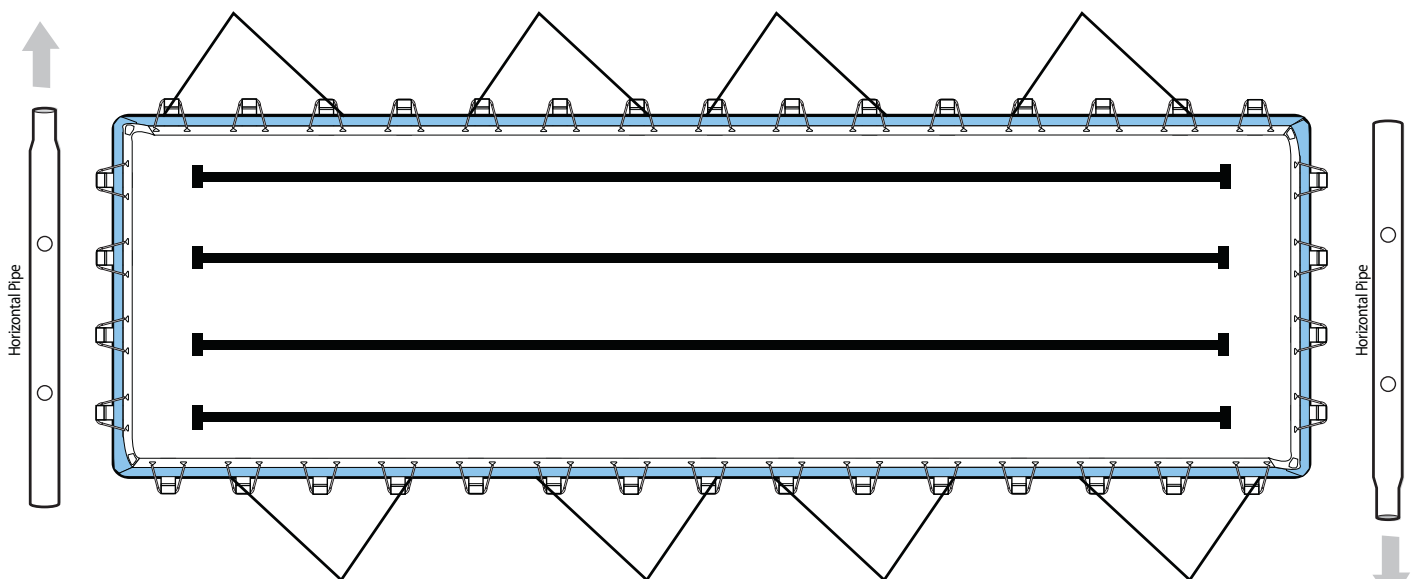
Repeat this process on the other side of the pool until both long sides are up and anchored.

ASSEMBLING THE POOL - Page 6

VERY IMPORTANT TIP: When assembling the other longer pool wall, be sure that the horizontal pipes are pointing in the opposite direction. In other words, the female end of the horizontal pipe on the B wall is pointing to C, and the female end of the horizontal pipe on the D wall is pointing to A - so that they will hook up properly in the end.

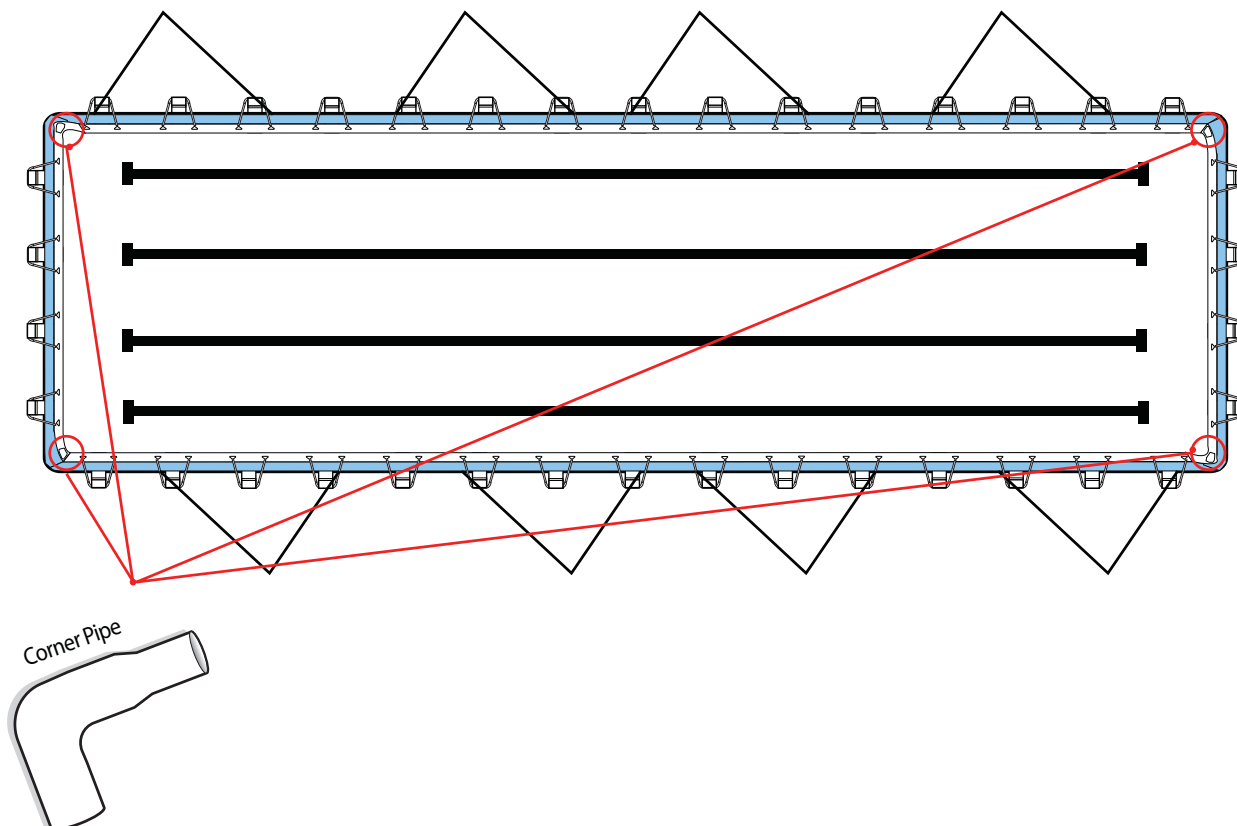


Continue inserting them through the shorter pool wall sleeve. Also attach the u-pipes and verticals. These walls will not need to be anchored up, as the anchored longer walls will hold them up.



ASSEMBLING THE POOL - Page 7

The corners are similar to the horizontal pipes in that they have a female and male side. They can be a bit stubborn to get into place, as they help to keep the pool frame taught. By maneuvering the liner material around and the frame you can get the corners in place. Once all four are in place, you can start filling the pool.



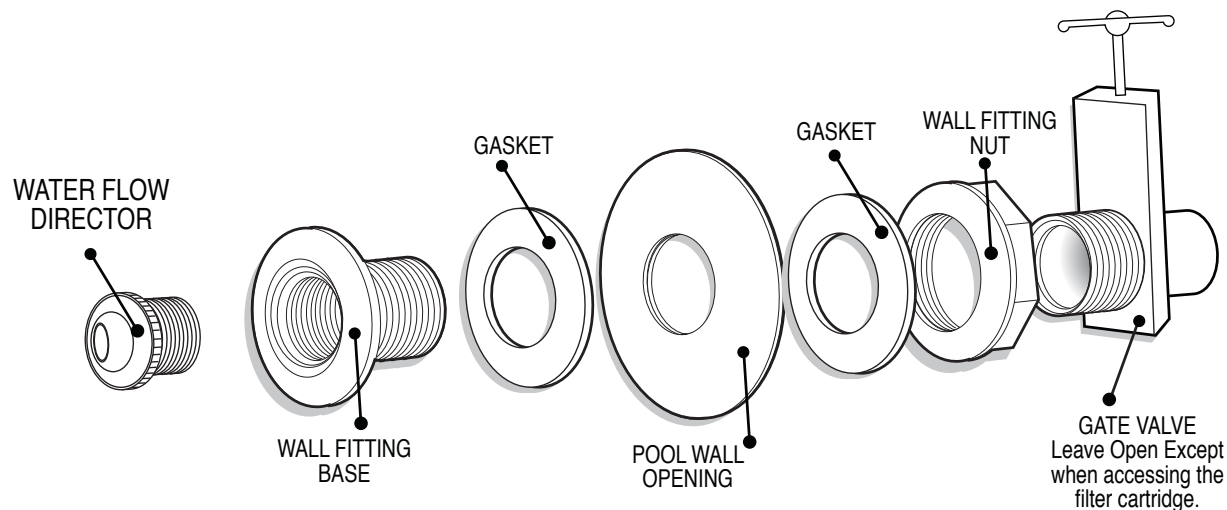
WARNING: All the frame components are designed to slip into place. If they are not going in, it is because the connections are not straight or the liner is bunched up.

The HORIZONTAL PIPES are heavy, do not let your weariness of the assembly cause you to fight with the frame. Be patient and it will attach.

IMPORTANT NOTE: The Pool Walls will bow in due to the weight of the poles and the angle of the supports. As the water fills, the bowing will subside, and (depending on how high you fill) may bow out a bit.

ATTACHING THE RETURN LINE - Page 8

Follow the below instructions for installing the return line fittings. Your plumber may elect not to use the gate valve, which is fine, but we highly recommend that both the return line and the skimmer have shut off valves attached near the pool, in the event something happens with the plumbing line. This will allow you to shut off the water flow at the pool source.



Refer to the Wide Mouth Skimmer installation instructions for the Wide-Mouth Skimmer.



5 YEAR LIMITED WARRANTY

We understand that most of our buyers are non-swimming pool professionals, so we have made owning and maintaining a portable swimming pool easy and affordable. But if anything goes wrong within the first five years, we will repair at no charge to you. The first 90 days, we cover shipping both ways. After that, your only obligation is to pay for the shipping to return the item back to us for repair. If, upon inspection, the repair was the result of a manufacturer's defect or error, the shipping costs will be refunded back to you (up to \$50 USD total per warranty shipment).

Special Note: As a courtesy to our customers, we offer post-dating on our warranty. If you are buying a portable pool package to take advantage of a special offer or sale price but are not planning to set it up for a month or two or longer, just let us know in advance and we will note your account to post-date your warranty.

Warranty Procedure: A warranty procedure is designed to help document and make a warranty process easier. If you feel you have a valid warranty claim, please email pictures of you your warranty concern to customer.care@reallyezpools.com. Be sure to include the full name the pool was purchased for so we can match our records.

Things you should know: 1.) An item is received and shows signs of abuse or abnormal use, there will be a charge to repair the item. This charge depends on the item being returned, but will not exceed \$100USD. 2.) If an item is inspected and the damage is a result of faulty install at the buyer's location, no further warranty repair will follow until proof the cause is fixed. 3.) If an item is received and has water, dirt or anything else that will impair our ability to repair, there will be a flat \$75 fee to clean the item first. Please make every effort to clean and dry the item prior to shipping back.

Please Note: Warranty repairs tend to take up to 20 days depending on the condition of the returned item and the time of year. During September 15 through May 1, warranty time is about 5-10 days. From May 1 to September 15, warranty time is about 15-25 days.

Disclaimer: This warranty is applicable to only portable pool packages and accessories bought from EZ Pool Products, Inc or online through www.reallyezpools.com. We are not responsible for any other product or accessory purchased from any other source.

Disclaimer: At no time will the maker and/or the maker's suppliers be responsible for any damage to the liner caused by your acts, the acts of others and shall have no liability to repair liner, or part(s) so damaged. The maker is not responsible for any damage to a part(s) or liner as a result of acts of God, nature, ground movement or some other unforeseen occurrence. We reserve the right to modify/discontinue without notice any model, style, color or design. - We reserve the right to void your warranty if your pool is out of level or uneven. Absolutely no other warranty will be honored, expressed, implied or noted on the Bill of Sale, other than what is written in this warranty. Customer shall indemnify, defend, and hold harmless the maker of this pool, including its officers, directors, shareholders, agents, employees, and representatives from and against all liability, demands, claims, suits, causes of action, proceedings, costs, losses, damages, recoveries, settlements, assessments, fines, penalties, and expenses (including interest, attorney fees, accounting fees, expert fees) incurred by customer, known or unknown, contingent or otherwise, directly or indirectly, arising from, related to, and/or connected with customer's purchase of the product(s) described on the purchase order, invoice, or other document attached hereto. Customer expressly waives any right of subrogation to any right that the maker now has or may have later in connection with the product(s) described on the purchase order, invoice, or other document attached hereto. If you do not protest the conditions of this warranty in writing and notify EZ Pool Products of your protest within 30 days of your purchase, it will be deemed that you have accepted and agreed to these terms.